

Art
Unlocked
Unearthed

JENNIFER LAUREN
GALLERY

Intro

The Jennifer Lauren Gallery held a two-week callout in April 2020 for artists that self-define as disabled and/or Deaf to submit one artwork for selection that has been made since January 2020, with no theme or art material specified. This callout culminates in this rich and vibrant online exhibition and zine: 'Art | Unlocked | Unearthed.'

With the help of artist and adult survivor Terence Wilde and curator Lisa Slominski, we have selected the work of 30 artists from 194 submissions. As part of the funding from Manchester International Festival, five of the selected artists are Greater Manchester based – highlighted by the word *Manchester.

Art provides a much-needed distraction and connection point for so many disabled and/or Deaf artists in order to combat the loneliness and isolation that many are currently facing due to Covid-19. Many of those featured are from supported studios who are doing an incredible job to move their programming online to continue supporting disabled artists from a distance.

Thank you to everyone who took the time to submit a work and we hope you enjoy some of the incredible art here, many from artists working out of supported studios. Supporting artist's wellbeing is of utmost importance to me and this callout is just one way of providing a boost to artists during this time. Please get in touch should any works be of interest to you.

Zine design: Molly Davies

www.jenniferlaurengallery.com

Instagram: @j_lgallery

Twitter: @j_l_gallery

Facebook: @jenniferlaurengallery

A note from the other selectors

Terence Wilde, Artist and adult survivor

I was very happy when Jennifer asked me to be part of the selection process for her callout – an online exhibition of this type is a much needed creative initiative and much needed in this unstable time when artists in particular are having to work in isolation. This is the first time I've done anything like this, so, when I began looking at the images on screen, I just wanted to gauge my initial emotional responses, before seeing the whole picture through the titles of work and stories behind their creations. I wanted to be fair and unbiased. I also wanted to bring a personal sensitivity and awareness when dealing with vulnerable artists, in this case artists identifying as disabled and/or Deaf. Submitting to callouts, with or without help, is a daunting and very brave thing to do, putting yourself out there and anticipating a response. I've been there many times and continue to do so. After quite a few hours I spent in my marking, I looked at the heart and soul of a large number of entries and made my decisions with my own heart and soul.

Lisa Slominski, Curator

It was such an honour to work with Jennifer Lauren Gallery on the selection for this national and international callout for artists. I was very impressed by the calibre of work submitted and even more enthralled by the intuitive creativity of the submissions. As a curator, I definitely discovered new artists from Jennifer's callout that I look forward to including in future projects.

Supported by Manchester International Festival
#MIFCreatives2020



Boots with Toes
Enamel on cassette
7.6x10.2cm, 3x4 inches

Oscar Azmitia was born in Manhattan in 1978 and began attending Pure Vision Arts in 2006. Encouraged to paint on canvas he has subsequently created numerous meticulous works, many influenced by biblical epics.



Two People in a Bar with Plants
Acrylic paint on cardboard
80x90cm, 31.5x35.4 inches

Yvonne is inspired by a broad range of photographs from magazines and books. She usually chooses group portraits and family pictures. When she first starts, she aims for an appealing composition of shapes, which she then finishes with a warm and rich use of colour. Her work is characterised by the sensitive and poetic scenes with various characters.



Christmas, New York (detail)
Oil pastel on paper
1014 x 57 cm, 400x22 inches

*Manchester

Michael Beard's artwork enables him to articulate his immense passion for travel. Compulsive writings of names of cities, famous towers and graphical signage and symbols that he identifies in each location, are strong themes in his work.



—
Her Mother

Mixed media on canvas
61x91.4cm, 24x36 inches

Susan Brown has attended Pure Vision Arts since 2002. Diagnosed with autism as a young child, she began drawing spirals, women and cars at the age of five. Brown first painted her characteristic grid like drawings on cardboard in the 1980's while working as a dishwasher at Friendly's where cardboard packing was readily available.

Geza Brunow



Sea Foam and Palm Leaves
Ink and watercolour on paper
23x30.5cm, 9x12 inches

I love the ocean and the sea. Before I became disabled to the point that I am now, I used to surf as much as possible. Now I just watch the world go by from the pier. This is one of many organic, freestyle “mood pieces” I create freestyle with pen and ink. I never know what will emerge.

Sasha Callaghan



How do you like your Blue Eyed Boy, Mr Death
Digital collage
14.9x14.9cm, 5.9x5.9 inches

As a disabled artist, my aim is to bring vivid and strange imaginings to life. Recently, I have been using a blend of collage and photomontage to create surreal artwork that encourages the viewer to think about difference and see beauty beyond the mainstream. Each piece is constructed to challenge assumptions of 'reality' and convention.



-
Making me Invisible
Mono screenprint
50x70cm, 19.7x27.6 inches

Give me time to talk. Let my voice be heard. Stop here, to listen. I may just have something worthwhile to say. You rush right past me making me invisible.



Cocktails

Digital drawing

21.5x28cm, 8.5x11 inches

*Manchester

This was made as part of a series of four pieces entitled 'Cocktails'.

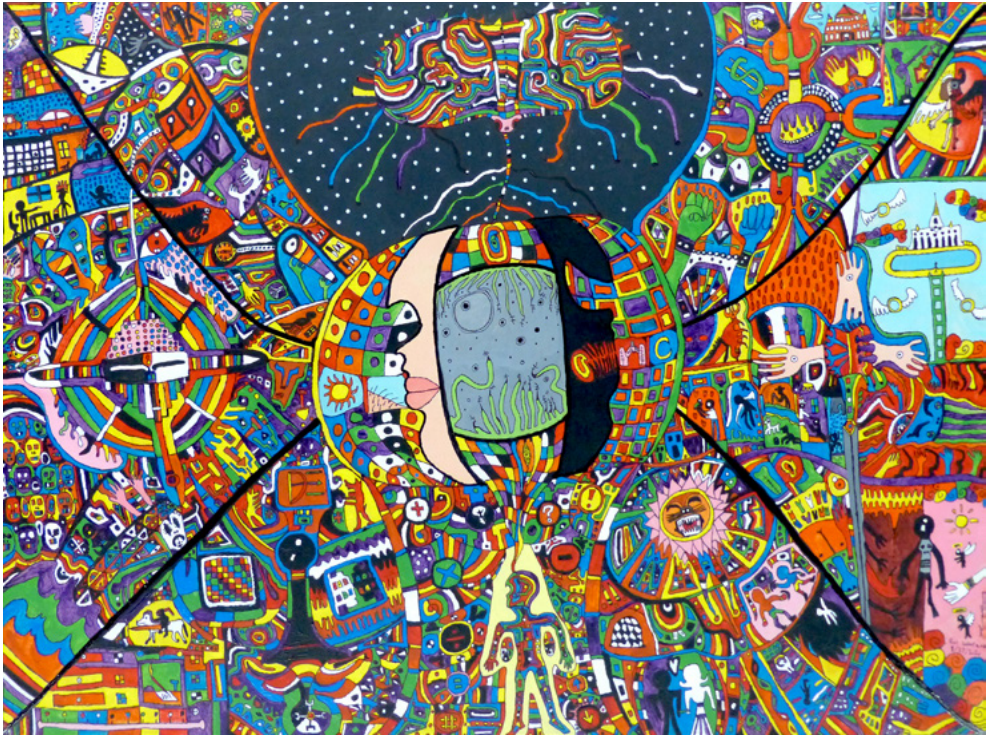


Untitled

Felt pens on paper
21x29cm, 8.3x11.4 inches

*Manchester

Jennie Franklin takes inspiration from found imagery, from leaflets and flyers and other paraphernalia, which she then interprets in her own style, picking and choosing from various sources to make her own compositions. Events and feelings that occur at the time of her drawing permeate the artwork – making for varied and personal pieces of art.



—
The Greyside of the Moonvine
Mixed media on wood
61x45.8cm, 24x18 inches

A talented artist, Roy Gabbay draws, paints, sculpts and takes photographs. His highly detailed art is surrealistic and has been influenced by psychedelic artwork and his love of heavy metal music.

Madeleine Hawes



Isolation

Acrylic paint on MDF wood

74x109.5x13cm, 29.1x43.1x5.1 inches

Signing is disappearing. They laugh, I don't; they are listening I am not. I stare and wait for the signing to begin. I am like the dog.



—
Untitled

Marker pen on paper
42x29cm, 16.5x11.4 inches

His world is the world of little things and fantastic animals, very much delicate, floating, loose and usually smiling. As time goes by, it gains an increasing process of adornment and decoration.



Muscle Suit
Mixed textiles
127x127x15cm, 50x50x5.9 inches

HML is a multimedia artist with a background as a seamstress. She created Muscle Suit for Interact cast members to wear in 'Here. Them. Now.' A performance about the intersection of disability, gender identity and sexuality.

Beth Hopkins



Flux (detail)

Biro on paper

56x73cm, 22x28.7 inches

This drawing explores our inner structures and connections, at a time when we are hyper aware of the vulnerability of our bodies. It is detail from a piece that is three metres long.



Satellite of Love

Pen on paper

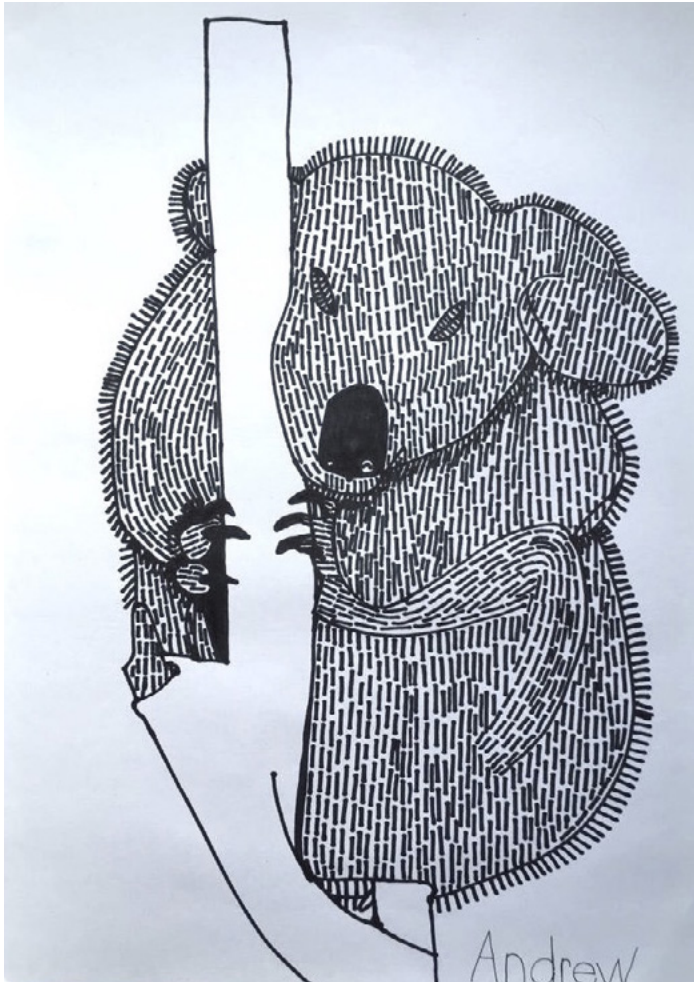
42x59cm, 16.5x23.2 inches

The title says it all really.



NYC Bodega Cat
Mixed media on paper
48.2x61cm, 19x24 inches

Simone Johnson's whimsical and imaginative art depicts brightly coloured scenes of animals, particularly cats.



Koala

Marker pen on paper

29x42cm, 11.4x16.5 inches

*Manchester

Andrew Johnstone works in a careful, precise and deliberate way – a style that shines through in any medium he chooses.



Portrait of Eleanor Xiniwe
Embroidery
40.5cmx61cm, 15.9x24 inches

It's my first ever embroidery.
I'm pleased with how it looks.
Art is good for the people.

Morgane Salmon



Ouroboros with 2 Lizards
Glazed faience with gold luster
40x25cm, 15.8x9.8 inches

These ancient representations of serpents or dragons biting their tails are widespread symbols that represent the eternal cycle of regeneration. To augment the magical aura of her two fetish animals (she replaced the dragon by the lizard), Morgane highlights them by applying a gold luster during a third firing.

Patricia Shrigley



Breeder

Mixed media on canvas
114x130x3.8cm, 45x51x1.5inches

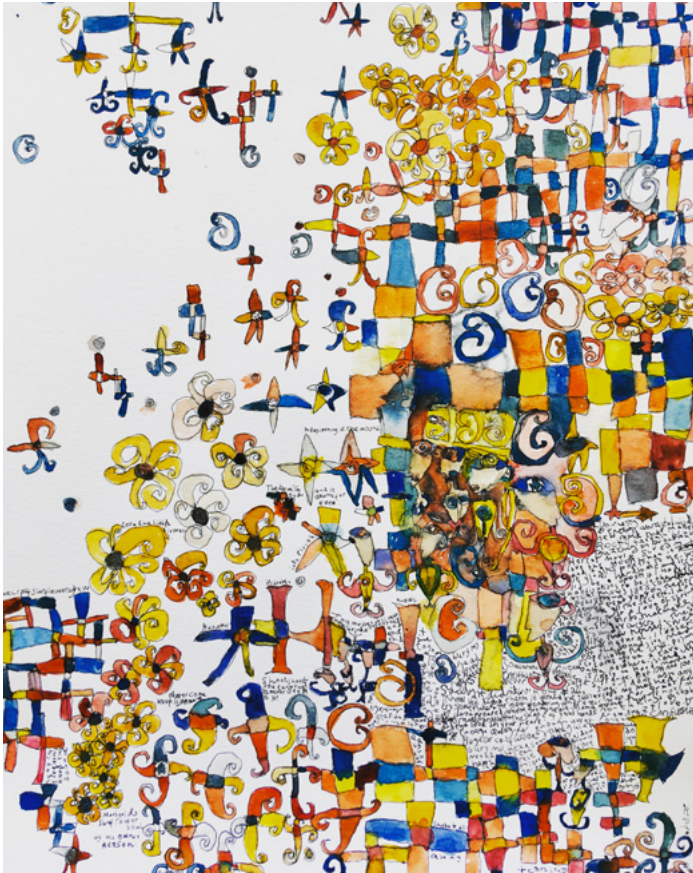
Playing with the stereotypical views on the meaning of the so-called underclass. Humans are often referred to as feral, breeding like pigeons for benefits.



Woman with Hands
Coloured pencil on paper
48x61cm, 19x24 inches

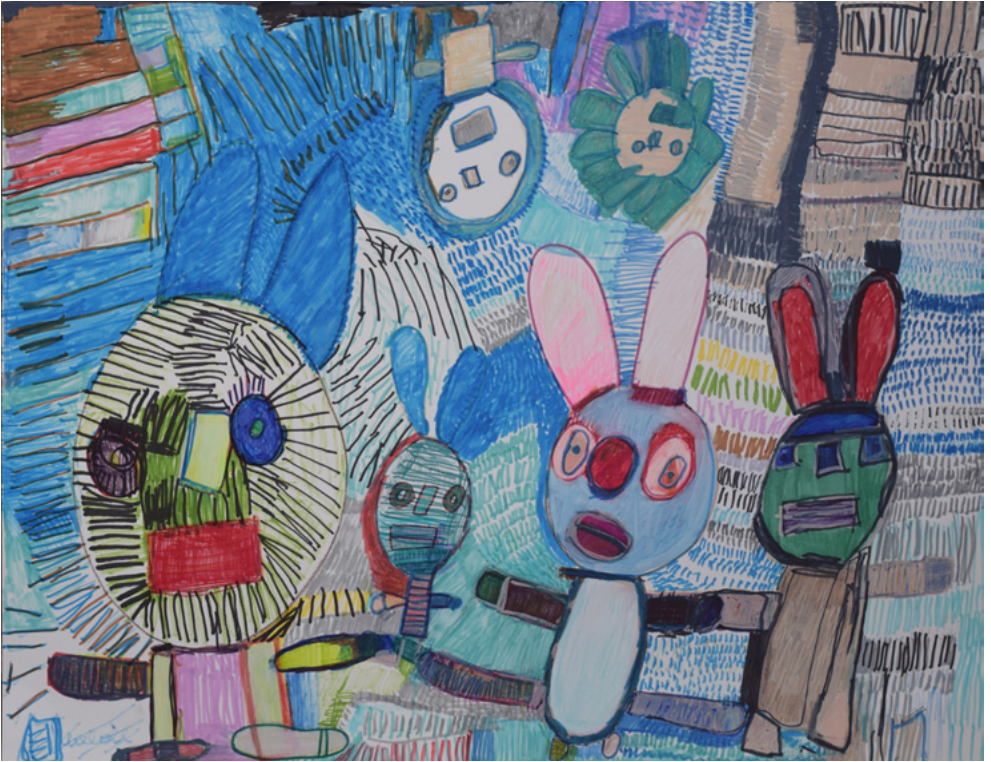
Byron Smith's drawings and paintings are often gentle, celebratory and intriguing depictions of women. Sourcing his images from fashion magazines, Smith exaggerates his model's features with long, bold eyelashes, polished nails and plump and puckered lips.

Rosie Stevens



Sunflower Soul
Ink pen and watercolour on paper
29.7x42cm, 11.7x16.5 inches

Through my process of art making I have tried to allow shapes, words and colours to form freely on the page. The piece incorporates stars, flowers, crosses and moons as well as some human-like figures. I have been looking at the art of Vincent Van Gogh recently and find his work inspiring. I listen to music on the radio when I draw, this helps me to move and feel.

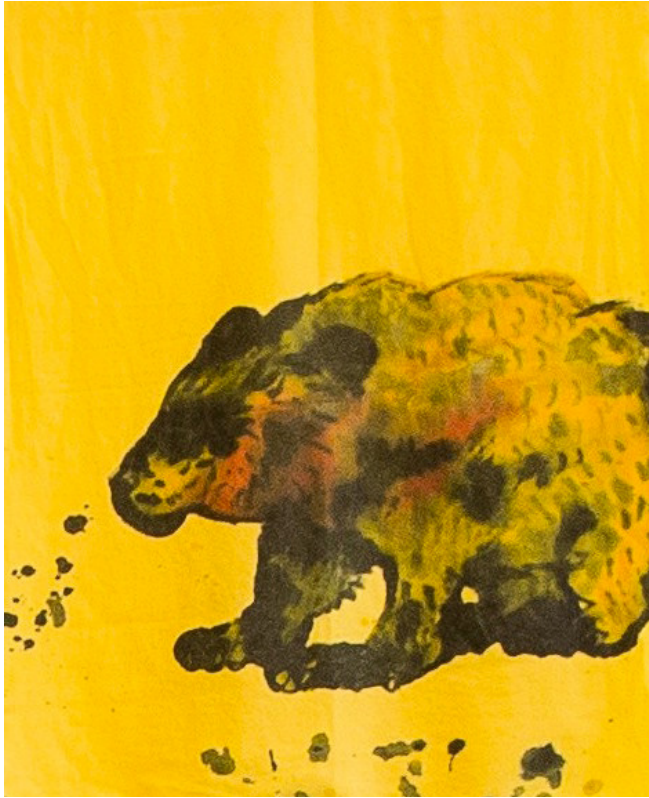


Stuffed Animals

Marker pen on paper

70x55cm, 27.6x21.7 inches

Martine just loves people and animals. With her caring character, she takes equal care of her dolls and stuffed animals as the people who surround her daily. These people, as well as other cuddly figures, appear as characters in her paintings. Just as in real life, they surround her on canvas, sometimes prominently next to her, other times more in the background.



A Brown Bear from Europe or Alaska
Acrylic paint on orange fabric
50x91cm, 20x35.4 inches

*Manchester

Leslie Thompson has been a regular practising artist at the Venture Arts studios for over 20 years. He has a highly developed drawing style, drawing both from memory and through live observational drawings.



Spring Love

Prisma coloured pencils, pencil and sharpie on paper
61x48cm, 24x18.9 inches

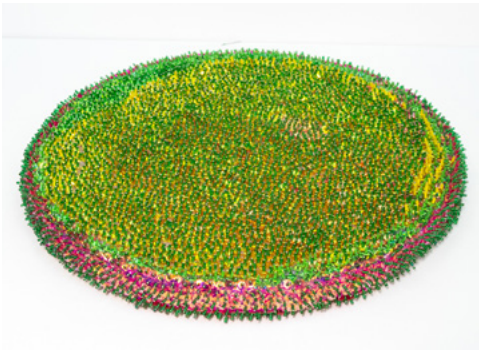
It is a picture of a couple enjoying being together on a nice Spring day or Summer day. I like to incorporate a lot of suns in my art, so the picture has a lot of suns and also I think the artwork represents just a nice day out with someone you care about.

Sara Ulfsparre



Grounded (IV)
Mixed media on paper
21x29.7cm, 8.3x11.7 inches

This is part of my current series of works, where a bird/woman hybrid figure without arms or wings appear, referencing disability, pain and loneliness, but also integrity.



–
Untitled (double sided)
Mixed media
14.1x14.1x5.1cm, 16x16x2 inches

Monica Valentine is enamored with colour, and is incredibly adept with her hands. Based on her sculptures that consist of vibrant layers of beads and sequins, it comes as a surprise that she is blind and has prosthetic eyes.

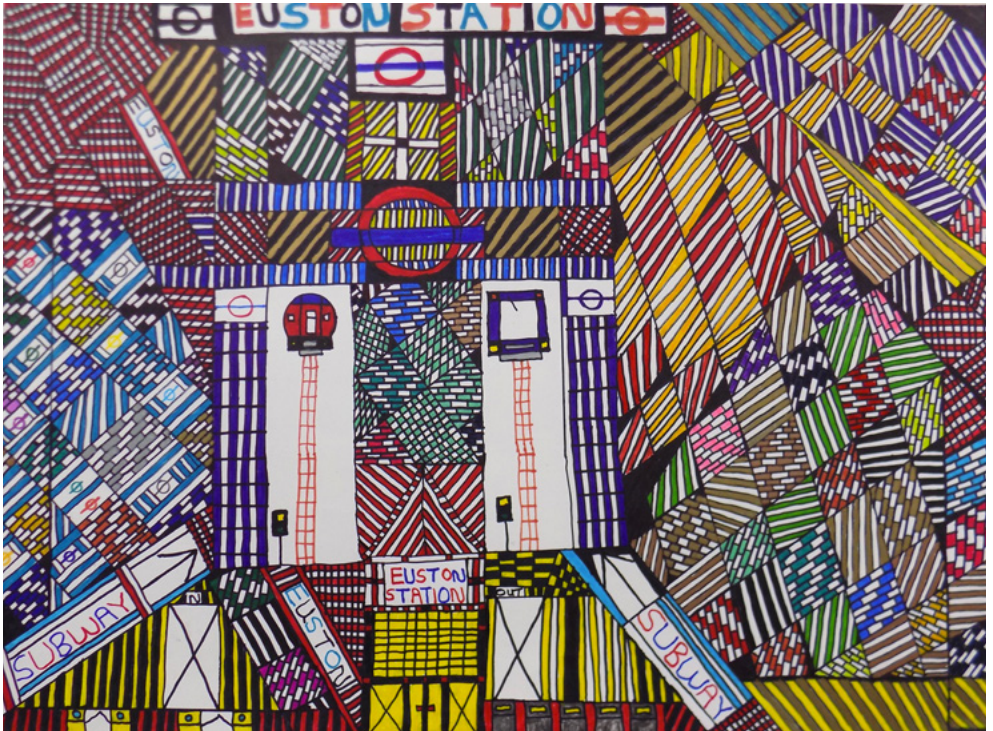


—
Untitled

Ink pen on paper

42x30cm, 16.5x11.8 inches

This illustration is part of a series of favourite places in Scotland. It is the view of Belmont Street when standing on Union Street in Aberdeen.



Euston Station
Pen and pencil on paper
84.1x59.4cm, 33.1x23.4 inches

My work is about London, transport links and changes I see when I walk around my neighbourhood. Things I notice, new buildings that are being built and things that catch my eye.